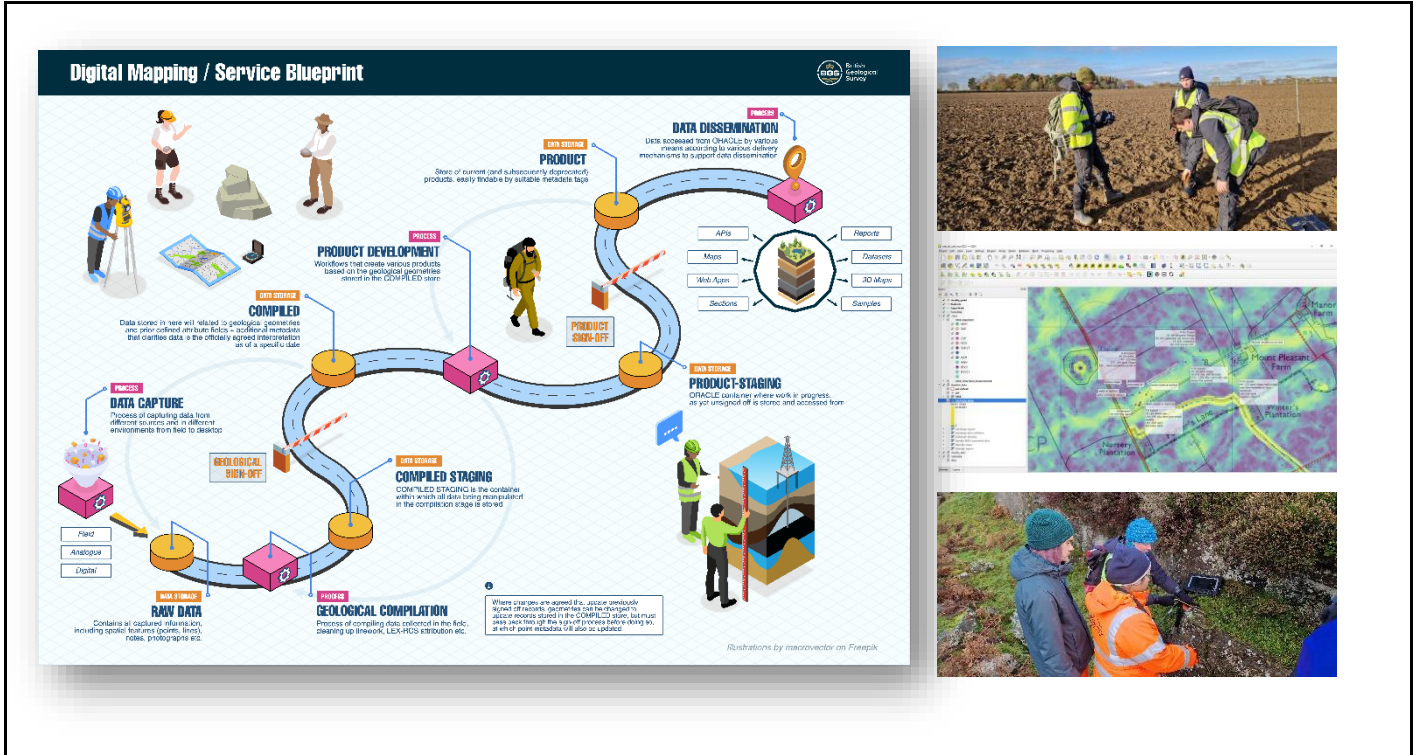




# The Geological Society of London: *East Midlands Regional Group – Hybrid Meeting*

## Robust, transparent and repeatable digital geological mapping



### Chris Williams, BGS.

In common with other long-standing organizations, the British Geological Survey has undergone a digital transformation over recent years. From analogue methods of geological mapping, data compilation and product development, we now work in a predominantly digital environment. We are currently refining our digital mapping workflow, from initial observation capture, through to map compilation and on towards product development and delivery. This integrates a range of technologies and has been co-designed with both internal and external user expectations at the forefront. An overview of the overall workflow architecture, as well as our plans regarding onward development and extension to other data types and future use cases will be presented.

Chris has a background in geo-environmental research, with over 12 years' experience in the sector. As the head of digital mapping at BGS, he oversees the shaping and development of BGS's digital geological data pipelines. This supports the core function of the organisation: the capture and provision of geological data and information for a range of potential users and applications.

**19:00 Tuesday 29<sup>th</sup> October 2024**

**BGS Keyworth (in person) & Zoom Meeting**

Coffee and biscuits from 18:30, talk starts at 19:00

